

# AD Products



## 8Mp Turret/Bullet IPC AI

IPC6TF4R8-AD-TPMSCR  
IPC6BF6R8-AD-TPMSCR

- 1/2.8" 8M CMOS Sensor
- 8MP(3840\*2160)@30fps
- WDR
- 2.8mm@F1.0 ,Fixed Lens
- Triple Streams Encoding
- Smart Dual Illumination
- Active Alarm with Red/Blue Light
- Sound Warning, Siren or Voice Prompt
- Built in Microphone and Speaker
- Two-Way Talk
- Smart Motion Detection
- Perimeter Protection
- Face Detection
- IP67

## 4Mp Turret/Bullet IPC AI

IPC6TF4R4-AD-TPMSCR  
IPC6BF6R4-AD-TPMSCR

- 1/2.7" 4M CMOS Sensor
- 4MP(2688\*1520)@30fps
- WDR
- 2.8mm@F1.0 ,Fixed Lens
- Triple Streams Encoding
- Smart Dual Illumination
- Active Alarm with Red/Blue Light
- Sound Warning, Siren or Voice Prompt
- Built in Microphone and Speaker
- Two-Way Talk
- Smart Motion Detection
- Perimeter Protection
- Face Detection
- IP67

## APPLICATION



House, Yard



Shopping Mall



Warehouse, Factory



Office, Building

**Homaxi** Maximum Protection for Your Home and Business



# Warn Before

## Crime Happens



Human/Vehicle Classification



Active Deterrence



Full Color Event



Easy to Use

Active deterrence products are the second generation of early-warning solutions released by Qualvision.

Based on advanced deep learning algorithms, siren, and light warning design, active deterrence products achieve smart dual illuminators that can be freely configured by users. 24/7 color events, enabling more details when monitoring at night. Instant alarm notifications push to mobile on time, and one-click arming/disarming via the app greatly improving the ease of use of the products. Active deterrence is an effective proactive solution that saves energy and reduces consumption. It covers a broad range of scenarios.

**Homaxi Inc. (Qualvision USA)**

Call us: +1 626-900-9818

ADD: 15310 Valley Blvd., City of Industry, CA 91746

**Sales & marketing**

homaxi@qualvisiontech.com

**Technical support**

support@qualvisiontech.com



www.homaxi.com

# What can AD products provide you?

## Before An Event

### Proactive Prevention

- Smart Motion Detection
- Perimeter Protection
- Built-in motion-activated warm lights for full-color video at night

## During An Event

### Warning Deterrence

- Red and Blue Flashing Light
- Two-way Talk
- Clear siren alarm

## After An Eve

### Event Playback

- Smart search



# Smart Illumination Mode

# Homaxi

### 1. IR light on >>>

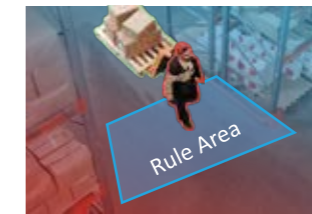
Please note: Here we set people as our target object to show how the smart illumination mode works.

IR lights stay on when there's no target movement at night. The camera records in black and white.



### 2. Warm light on >>>

Warm light turns on when a target object appears, recording color images to view more details.



### 3. Red & blue flashing light on

Red & Blue flashing lights turn on when the target triggers the rule. A pre-recorded audio message be triggered or a person can speak to the target through the camera's two way talk.



### 4. Warm light on

Speaker and Red & Blue flashing light turns off when the target leaves the rule area.



### 5. IR light on

IR lights turn on after a while.

# Human/Vehicle Classification

Human/Vehicle classification aims to eliminate false alarms by using advanced deep learning algorithms to differentiate between the shape of humans and vehicles within a scene. It only triggers an alarm when a person or vehicle is detected, effectively filter out false positives (leaves, animals, light, rain, etc.)



Detection (Human & Vehicle) accuracy rate up to 99%

Lower False Alarms less than 0.5%

Human detection distance up to 30m daytime

Vehicle detection distance up to 50m

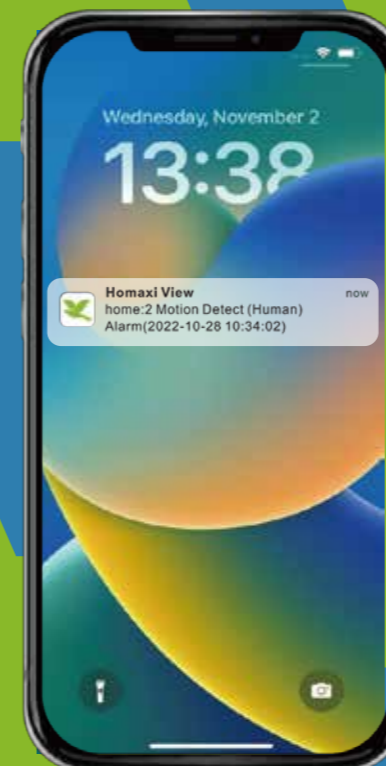


# Siren/Light Alert

Red and blue flashing lights, not affected by rain and fog, are more powerful than white lights. High power speaker (up to 110dB), clear siren sound, two-way talk. Multiple alarm audio sources can be selected, pre-recorded or custom sounds suitable for various scenarios (you can also easily set these functions via App).



# Easy to Use



Smart search to easily check human/vehicle video, saving a great deal of time and effort.



One-click arming/disarming, greatly simplify the operation.



Instant alarm notifications push to mobile, being fully connected at all times.



24/7 monitoring to reduce personnel monitoring.



Record and set alarm sounds on the mobile app directly, easy to operate.



Three streams and WDR, ensure clear images even in bright or backlit environments.



Smart dual illuminators reduce light pollution to achieve energy-saving and consumption reduction.



Not affected by rain or fog, picture quality is always clear and stable.



A combination of intelligent dual-light and active deterrent cameras, suitable for various scenarios.